

PRACTICE CYCLES

LONG 2-5-1 IN C, Bb, Ab, G, F & Eb

Dm7 G7 Cmaj7

Cm7 F7 Bbmaj7

Bbm7 Eb7 Abmaj7

Am7 D7 Gmaj7

Gm7 C7 Fmaj7

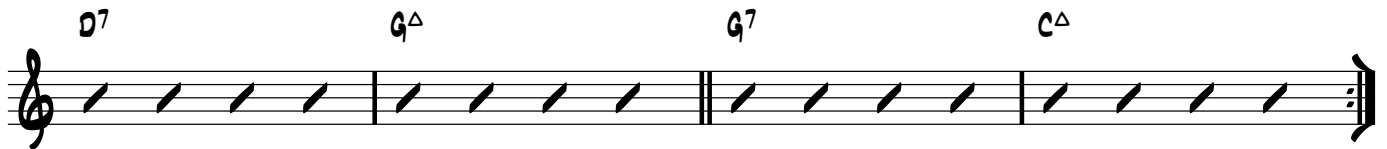
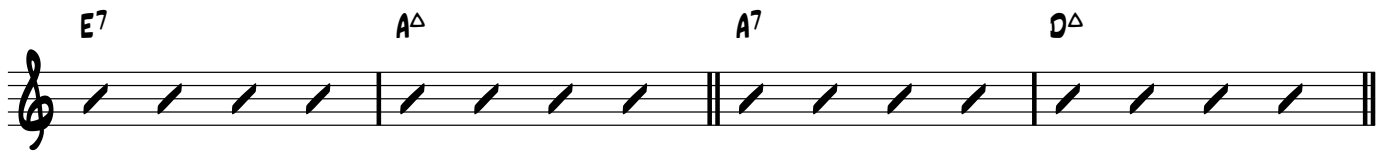
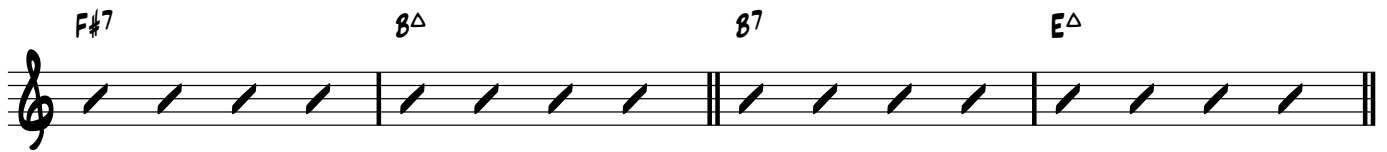
Fm7 Bb7 Ebmaj7

'5 TO 1' - CIRCLE OF 5TH'S

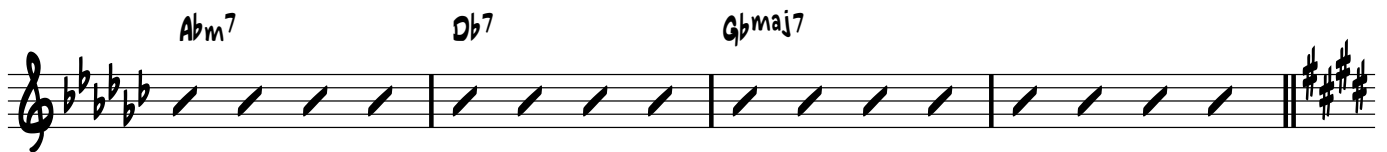
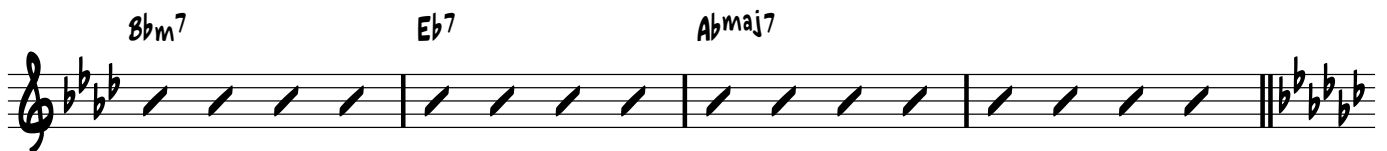
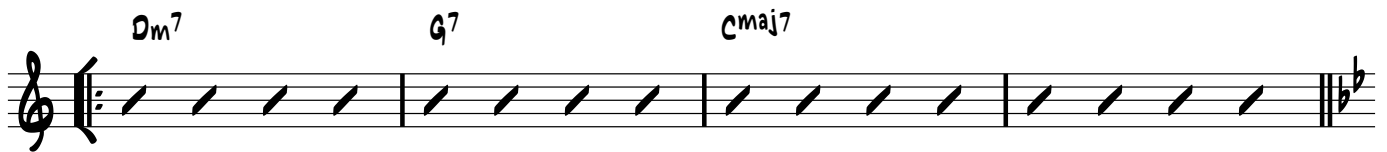
C7 FΔ F7 BbΔ

Bb7 EbΔ Eb7 AbΔ

Ab7 DbΔ Db7 GbΔ



LONG 2-5-1 IN C, B \flat , A \flat , G \flat , E & D; WHOLE STEPS DOWN



LONG 2-5-1 IN Eb, Db, B, A, G & F: WHOLE STEPS DOWN

Fm7 Eb7 Ebmaj7

Ebm7 Ab7 Dbmaj7

C#m7 F#7 gmaj7

Bm7 E7 Amaj7

Am7 D7 Gmaj7

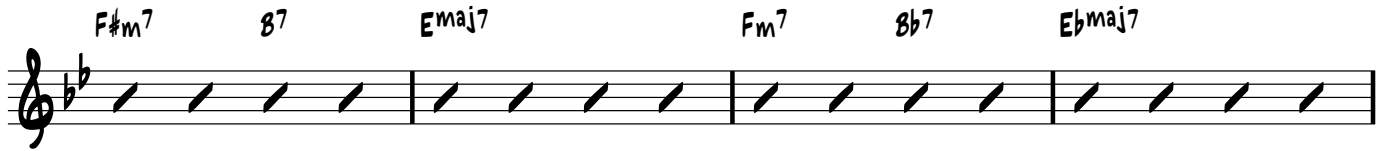
Gm7 C7 Fmaj7

SHORT 2-5-1 CHROMATIC DOWN ('AIREGIN')

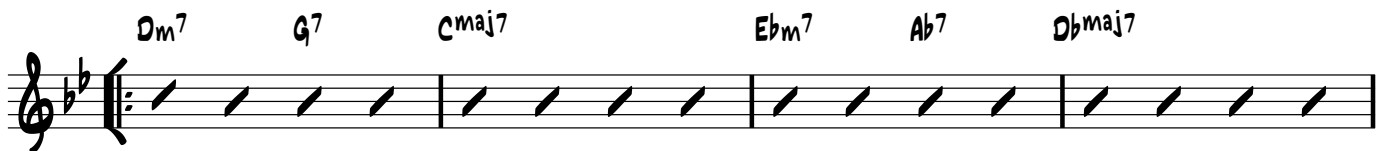
Dm7 G7 Cmaj7 C#m7 F#7 gmaj7

Cm7 F7 Bbmaj7 Bm7 E7 Amaj7

Bbm7 Eb7 Abmaj7 Am7 D7 Gmaj7



SHORT 2-5-1 CHROMATIC UP (VOYAGE)



'WOODY 'N' YOU' CYCLE : 12 KEYS

G^ø7 C7(♭9) F^ø7 B♭7(♭9)

E♭^ø7 A♭7(♭9) D♭maj7

F[♯]ø7 B7(♭9) E^ø7 A7(♭9)

D^ø7 G7(♭9) Cmaj7 ETCETERA

'WHISPER NOT' CYCLE : 12 KEYS

Cm⁷ Cm/B♭ A^ø7 D7(♭9) Gm⁷ Gm/F E^ø7 A7(♭9)

Dm⁷ Dm/C B^ø7 E7(♭9) Am⁷ Am/G F[♯]ø7 B7(♭9) ETCETERA